



jordanfishwick

117 Nell Lane, M20 2DU
£1,350 Per Calendar Month



Nell Lane West Didsbury M20 2DU

£1,350 Per Calendar Month



The Property

*** AVAILABLE NOW *** A contemporary two double bedroomed apartment in West Didsbury, located in the extremely popular 'Aspen' development. Located close to local amenities of Burton Road and Metrolink it is ideal for a couple of professional sharers. The property in brief comprises: reception hall including storage cupboard, feature open plan living space offering a lounge & dining area with French doors to patio and a breakfast kitchen housing integrated appliances. There are also two double bedrooms, the master with en-suite shower room and main family bathroom. Allocated parking space set behind secure electric gates. Offered on a furnished basis for a 6-month initial tenancy only. Contact Didsbury to arrange a viewing on 0161 4345290

EPC Rating - C

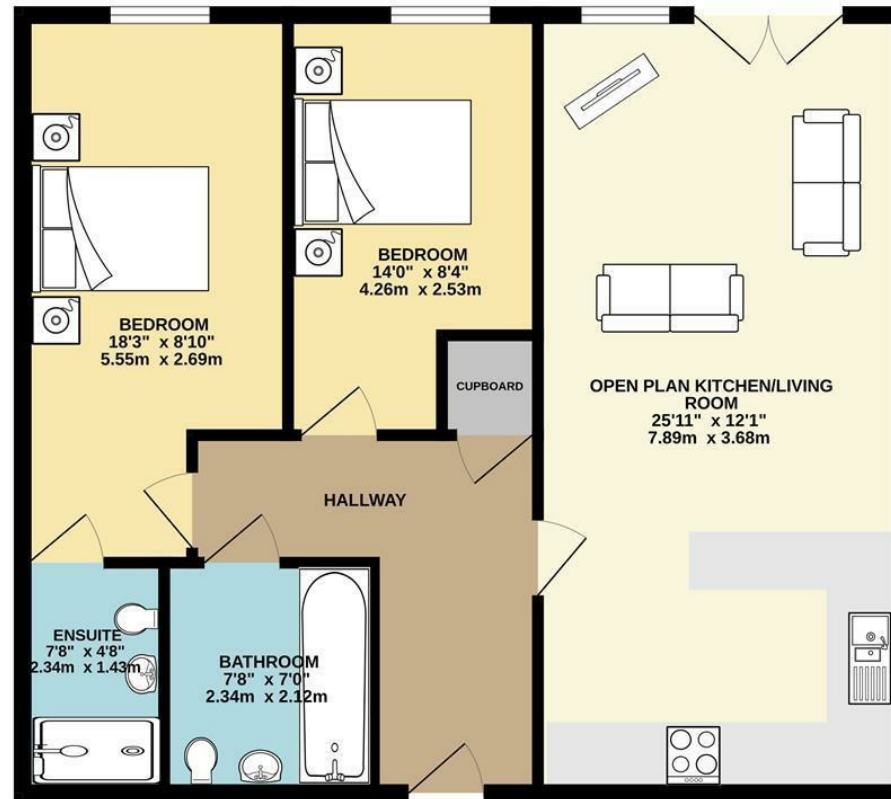
- Available Now
- Two Double Bedrooms
- Two Bathrooms
- Furnished
- Ideal for Couples or Sharers
- Great Location of West Didsbury
- Outdoor Space
- Parking
- Council Tax Band D
- EPC Rating C



Energy Efficiency Rating		
	Current	Potential
Very energy efficient - lower running costs		
(92 plus) A		
(81-91) B		
(69-80) C	73	74
(55-68) D		
(39-54) E		
(21-38) F		
(1-20) G		
Not energy efficient - higher running costs		
England & Wales		EU Directive 2002/91/EC



GROUND FLOOR
756 sq.ft. (70.2 sq.m.) approx.



TOTAL FLOOR AREA : 756 sq.ft. (70.2 sq.m.) approx.
Measurements are approximate. Not to scale. Illustrative purposes only.
Made with Metropix ©2024



These particulars are believed to be accurate but they are not guaranteed and do not form a contract. Neither Jordan Fishwick nor the vendor or lessor accept any responsibility in respect of these particulars, which are not intended to be statements or representations of fact and any intending purchaser or lessee must satisfy himself by inspection or otherwise as to the correctness of each of the statements contained in these particulars. Any floorplans on this brochure are for illustrative purposes only and are not necessarily to scale.

Offices at: Offices at Chorlton, Didsbury, Disley, Hale, Glossop, Macclesfield, Manchester Deansgate, Manchester Whitworth Street, New Mills, Sale, Wilmslow and Withington